

Inhalt • Contents

| | Seite • Page | CD | |
|---|--------------|-------|----|
| Ein paar persönliche Gedanken • A few thoughts | 3 | | |
| Wie verwende ich dieses Heft • How do I use this book? | 4 | | |
| Durtonleitern • Major Scales | | | |
| 12 Stairs to Luck | 5 | | |
| S1 – Stairs to Luck in D | 6 | 3/4 | |
| S2 – Stairs to Luck in A | 7 | 5/6 | |
| S3 – Stairs to Luck in E | 8 | 7/8 | |
| S4 – Stairs to Luck in G | 9 | 9/10 | |
| S5 – Stairs to Luck in C | 10 | 11/12 | |
| S6 – Stairs to Luck in B | 11 | 13/14 | |
| S7 – Stairs to Luck in F# | 12 | 15/16 | |
| S8 – Stairs to Luck in F | 13 | 17/18 | |
| S9 – Stairs to Luck in Bb | 14 | 19/20 | |
| S10 – Stairs to Luck in C# | 15 | 21/22 | |
| S11 – Stairs to Luck in Ab | 16 | 23/24 | |
| S12 – Stairs to Luck in Eb | 17 | 25/26 | |
| Funky | 18 | | |
| F1 – Funky D | 20 | 27 | |
| F2 – Funky G | 21 | 28 | |
| F3 – Funky C | 22 | 29 | |
| F4 – Funky F | 23 | 30 | |
| F5 – Funky Bb | 24 | 31 | |
| F6 – Funky Eb | 25 | 32 | |
| F7 – Funky Ab | 26 | 33 | |
| F8 – Funky Db | 27 | 34 | |
| F9 – Funky F# | 28 | 35 | |
| F10 – Funky B | 29 | 36 | |
| F11 – Funky E | 30 | 37 | |
| F12 – Funky A | 31 | 38 | |
| Durtonleitern und Dreiklänge • Major Scales and Arpeggios | | | 32 |
| Im Quartenzirkel • In a cycle of fourths | | | |
| D / G / C | 32 | 39 | |
| F / B / Es • F / Bb / Eb | 32 | 40 | |
| As / Des / Ges • Ab / Db / Gb | 32 | 41 | |
| H / E / A • B / E / A | 32 | 42 | |
| Alle Tonarten • All keys | | 43 | |
| Mit der kleinen Septime • With the minor seventh | | | |
| D / G / C | 32 | 44 | |
| F / B / Es • F / Bb / Eb | 32 | 45 | |
| As / Des / Ges • Ab / Db / Gb | | 46 | |
| H / E / A • B / E / A | | 47 | |
| Alle Tonarten • All keys | | 48 | |
| Durtonleitern und Dreiklänge alternierend • Alternating major scales and arpeggios | | | 33 |
| Gedanken über das Improvisieren • Improvisation | | | 34 |
| Spielstücke • Pieces for Playing | | | 36 |
| Bossanella | 36 | 49/50 | |
| Pop Ballade | 37 | 51/52 | |
| Stimmton a' = 442 Hz • Tuning note A = 442 Hz | | | 1 |
| Stimmton b' • Tuning note Bb | | | 2 |



Track 3/4

12 Stairs to Luck

S1 – Stairs to Luck in D



Klaus Dickbauer
(* 1961)

Pattern

Scale

Part 1 in Bb

Part 2 in Bb

Part 3 in Bb

Bass in C

Var. 1

Var. 2

8 *ad lib.*

Var. 3

Var. 4

Fine

8 *ad lib.*

Improvisation

Dmaj7

D.C. al Fine



S2 – Stairs to Luck in A

Pattern **Scale**

Part 1 in Bb

Part 2 in Bb

Part 3 in Bb

Bass in C

Var. 1 **Var. 2**

Var. 3 **Var. 4** **Fine**

8^{ad lib.} *8^{ad lib.}*

Improvisation

A maj7

D.C. al Fine

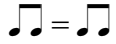
Funky

Klaus Dickbauer



Track 27

F1 – Funky D



Groove / Improvisation

Part 1 in Bb

Part 2 in Bb

Part 3 in Bb

Bass in C

Fine

Unison

8 *ad lib.*

8

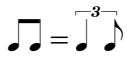
5

D.C. al Fine
von der Quinte chromatisch
abwärts zum Grundton



Track 28

F2 – Funky G



Groove / Improvisation

Part 1 in Bb

Part 2 in Bb

Part 3 in Bb

Bass in C

Fine

Unison

D.C. al Fine

Spielstücke

Nun folgen zwei Spielstücke, in denen du das Spielen und Improvisieren von Tonleitern und Dreiklängen in die Praxis umsetzen kannst. Stimme dich mit den Vorübungen auf die Stücke ein.

Pieces for Playing

In the following two pieces you can put into practice the playing and improvising of scales and arpeggios. Use the preliminary exercises to get ready for the pieces.

Vorübungen zu *Bossanella*

Dreiklang C-Dur • C major arpeggio

Dreiklang D-Dur • D major arpeggio

Bossanella



Track 49/50

Klaus Dickbauer

Pop Ballade

Bei diesem Stück werden die Teile B, D und F doppelt so schnell gespielt wie die Teile A, C und E. Man nennt das *Double Time* bzw. *Half Time*. Achte darauf, in der *Double Time* in Halben Noten zu denken, die das gleiche Tempo haben wie zuvor die Viertelnoten.

In this piece sections B, D and F are played twice as fast as sections A, C and E. This is called *double time* or *half time*. Make sure to think in half notes when playing in *double time*. The half notes are played at the same tempo as the preceding quarter notes.

Auf der Website www.universaledition.com/grooveconnection1 findest du eine Klavierbegleitung und eine zweite Stimme für Teil C.

On the website www.universaledition.com/grooveconnection1 you can find a piano accompaniment and a second part for section C.

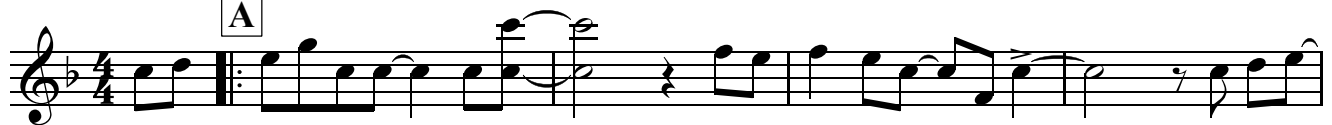


Track 51/52

Klaus Dickbauer

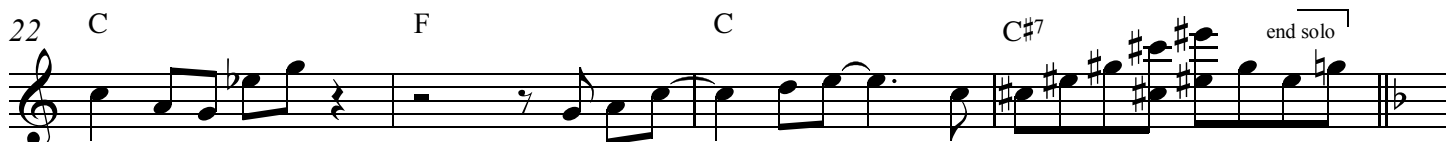
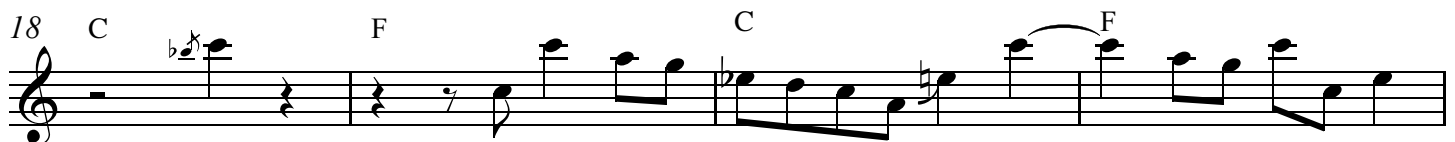
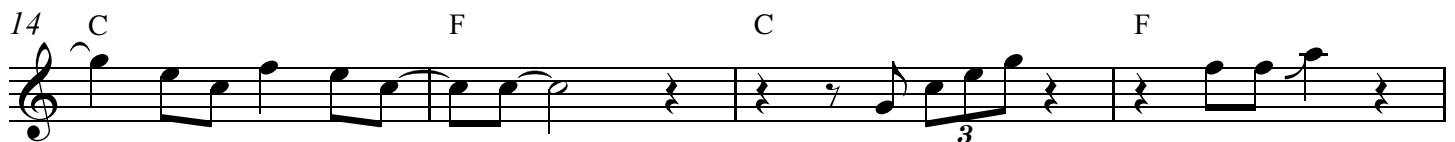
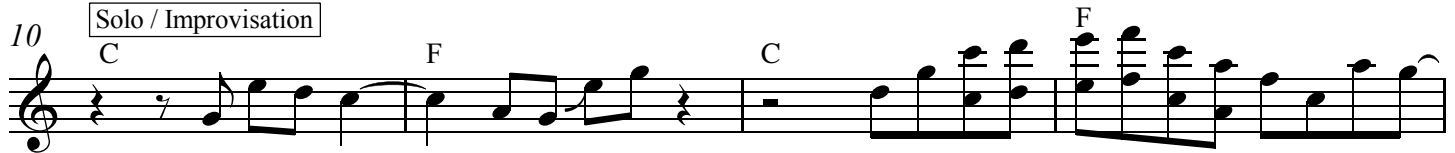
$\text{♩} = 80$ ($\text{♩} = \text{♩}$)

A



B $\text{♩} = \text{♩}$ ($\text{♩} = 160$)

Solo / Improvisation



C $\text{♩} = \text{♩}$ ($\text{♩} = 80$)

